

# Laser Dye / NIR Dye

## LT-D1201C 1,1':4'1"-terphenyl

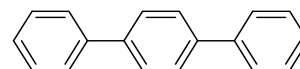
CAS. No. : 92-94-4

Formula : C<sub>18</sub>H<sub>14</sub>

MW : 230.31

### Dye Laser Characteristics

Pump source (nm)	Lasing wavelength		Concentration (g/L)	Solvent	Abs (λ-max)	FI (λ-max)	
	Peak(nm)	Range(nm)					
XeCl(308)	340	334-345	0.46	cyclohexane	276 *	337 *	Ref. 1
KrF(248)	338	326-359	0.23	cyclohexane			Ref. 2



Reference : 1.Appl.Phys.,19, 35(1979)

2.Optics Commun., 26(3), 396(1978)

\* cyclohexane

## LT-D1202C 1,1':4',1":4",1""-quaterphenyl

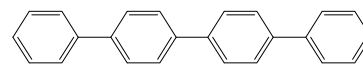
CAS. No.: 135-70-6

Formula : C<sub>24</sub>H<sub>18</sub>

MW : 306.41

### Dye Laser Characteristics

Pump source (nm)	Lasing wavelength		Concentration (g/L)	Solvent	Abs (λ-max)	FI (λ-max)	
	Peak(nm)	Range(nm)					
N2(337)	374	362-390	2.1	toluene	294*	365*	Ref. 1



Reference : 1.Nature, 225, 544(1970)

\* cyclohexane

## LT-D1203C 3,5,3""',5""'-tetra-t-butyl-p-quinquephenyl

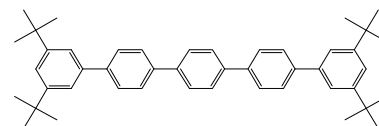
CAS. No.: 89703-16-2

Formula : C<sub>46</sub>H<sub>54</sub>

MW : 606.93

### Dye Laser Characteristics

Pump source (nm)	Lasing wavelength		Concentration (g/L)	Solvent	Abs (λ-max)	FI (λ-max)	
	Peak(nm)	Range(nm)					
N2(337)	387	372-411	0.52		311 (p-dioxane)	390 (p-dioxane)	



## LT-D1204C 2-methyl-5-t-butyl-p-quaterphenyl

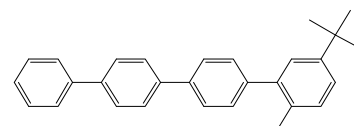
CAS. No.: 114932-35-3

Formula : C<sub>29</sub>H<sub>28</sub>

MW : 376.51

### Dye Laser Characteristics

Pump source (nm)	Lasing wavelength		Concentration (g/L)	Solvent	Abs (λ-max)	FI (λ-max)	
	Peak(nm)	Range(nm)					
XeCl(308)	359	346-377	0.23	p-dioxane	290 (p-dioxane)	364 (p-dioxane)	Ref. 1



Reference : 1.Appl. Phys. B32, 9(1983)

**LT-D1205C 2,2''-dimethyl-1,1':4'1''-terphenyl**

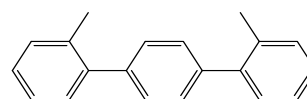
CAS. No.: 53092-64-1

Formula : C<sub>20</sub>H<sub>18</sub>

MW : 258.36

**Dye Laser Characteristics**

Pump source (nm)	Lasing wavelength		Concentration (g/L)	Solvent	Abs (λ-max)	FI (λ-max)	Ref. 1
	Peak(nm)	Range(nm)					
KrF(248)	332	311-355	0.25	Cyclohexane	252*	336*	



Reference : 1.Appl. Phys. 20, 283(1979)

\* cyclohexane

**LT-D1206C 2'',3,3'3'''-tetramethyl-1,1':4'1'':4''1'''-quaterphenyl**

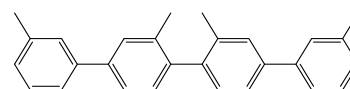
CAS. No.: 4575-13-7

Formula : C<sub>28</sub>H<sub>26</sub>

MW : 362.52

**Dye Laser Characteristics**

Pump source (nm)	Lasing wavelength		Concentration (g/L)	Solvent	Abs (λ-max)	FI (λ-max)
	Peak(nm)	Range(nm)				
XeCl(308)	354	343-365	0.73	p-dioxane	266*	350*
Nd:YAG(266)	350	338-361	0.73	cyclohexane		



\* cyclohexane

**LT-D1207C 2-[1,1'-biphenyl]-4-yl-5-[4-(1,1-dimethylethyl)phenyl]-1,3,4-oxadiazole**

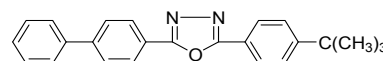
CAS. No.: 15082-28-7

Formula : C<sub>24</sub>H<sub>22</sub>N<sub>2</sub>O

MW : 354.5

**Dye Laser Characteristics**

Pump source (nm)	Lasing wavelength		Concentration (g/L)	Solvent	Abs (λ-max)	FI (λ-max)
	Peak(nm)	Range(nm)				
XeCl(308)	363	356-385	0.3	p-dioxane	304	365
Nd:YAG(266)	362	354-389	1.77	cyclohexane	(p-dioxane)	(p-dioxane)

**LT-D1209C 4,4''-(1,2-ethenediyl)bis-1,1'-biphenyl**

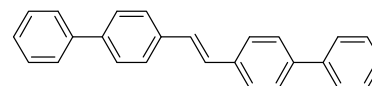
CAS. No.: 2039-68-1

Formula : C<sub>26</sub>H<sub>20</sub>

MW : 332.45

**Dye Laser Characteristics**

Pump source (nm)	Lasing wavelength		Concentration (g/L)	Solvent	Abs (λ-max)	FI (λ-max)
	Peak(nm)	Range(nm)				
XeCl(308)	406	397-414	0.33	p-dioxane	341	405
N2(337)	406	383-418	1	p-dioxane	(benzene)	(benzene)



**LT-D1210C****2,2''-([1,1'-biphenyl]-4,4'-diyldi-2,1-ethenediyl)bis-benzenesulfonic acid disodium salt**

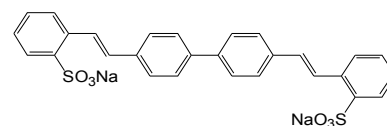
CAS. No.: 27344-41-8

Formula : C<sub>28</sub>H<sub>20</sub>O<sub>6</sub>S<sub>2</sub>Na<sub>2</sub>

MW : 562.56

**Dye Laser Characteristics**

Pump source (nm)	Lasing wavelength		Concentration (g/L)	Solvent	Abs (λ-max)	FI (λ-max)
	Peak(nm)	Range(nm)				
XeCl(308)	425	412-435	0.56	methanol	349	425
N2(337)	425	414-437	0.96	methanol	(methanol)	(ethanol)

**LT-D1211C****1,2,3,8-tetrahydro-1,2,3,3,5-pentamethyl-7H-pyrrolo[3,2-g]quinolin-7-one**

CAS. No.: 58336-37-1

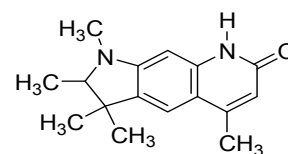
Formula : C<sub>16</sub>H<sub>20</sub>N<sub>2</sub>O

MW : 256.34

**Dye Laser Characteristics**

Pump source (nm)	Lasing wavelength		Concentration (g/L)	Solvent	Abs (λ-max)	FI (λ-max)
	Peak(nm)	Range(nm)				
XeCl(308)	415	399-433	0.05	methanol	367	413
N2(337)	423	408-448	0.77	ethanol	(ethanol)	(ethanol)

Ref. 1



Reference : 1. Appl. Optics, 20, 3553(1981)

**LT-D1212C****4-methyl-7-(4-morpholinyl)-2H-pyrano[2,3-b]pyridin-2-one**

CAS. No.: 57980-07-1

Formula : C<sub>13</sub>H<sub>14</sub>N<sub>2</sub>O<sub>3</sub>

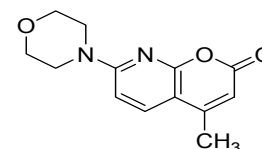
MW : 246.26

**Dye Laser Characteristics**

Pump source (nm)	Lasing wavelength		Concentration (g/L)	Solvent	Abs (λ-max)	FI (λ-max)
	Peak(nm)	Range(nm)				
N2(337)	427	417-446	1.85	ethanol	357	428

(ethanol)

(ethanol)

**LT-D1213C****7-amino-4-methyl-2H-1-benzopyran-2-one**

CAS. No.: 26093-31-2

Formula : C<sub>10</sub>H<sub>9</sub>NO<sub>2</sub>

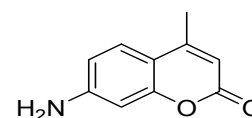
MW : 175.15

**Dye Laser Characteristics**

Pump source (nm)	Lasing wavelength		Concentration (g/L)	Solvent	Abs (λ-max)	FI (λ-max)
	Peak(nm)	Range(nm)				
N2(337)	437	417-473	0.4	ethanol	354	428
XeCl(308)	438	422-466	1.23	methanol	(ethanol)	(ethanol)

Ref. 1

Reference : 1. Appl. Optics, 20, 3553(1981)



**LT-D1214C 7-(ethylamino)-4-methyl-2H-1-benzopyran-2-one**

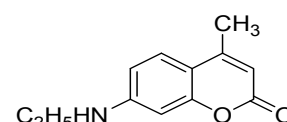
CAS. No.: 28821-18-3

Formula : C<sub>12</sub>H<sub>13</sub>NO<sub>2</sub>

MW : 203.24

**Dye Laser Characteristics**

Pump source (nm)	Lasing wavelength		Concentration (g/L)	Solvent	Abs (λ-max)	FI (λ-max)
	Peak(nm)	Range(nm)				
FL	445	423-445		MeOH/H <sub>2</sub> O =1/1	363 (methanol)	430 (ethanol)

**LT-D1215C 7-(ethylamino)-4,6-dimethyl-2H,-1-benzopyran-2-one**

CAS. No.: 26078-25-1

Formula : C<sub>13</sub>H<sub>15</sub>NO<sub>2</sub>

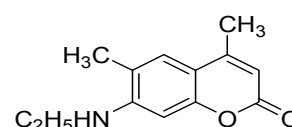
MW : 217

**Dye Laser Characteristics**

Pump source (nm)	Lasing wavelength		Concentration (g/L)	Solvent	Abs (λ-max)	FI (λ-max)
	Peak(nm)	Range(nm)				
FL	450	427-488	0.04	methanol		
XeCl(308)	451	430-481	1.6	methanol	366 (ethanol)	435 (ethanol) Ref. 1
Vd:YAG(355)	452	436-468	0.065	methanol		Ref. 2

Reference : 1.Appl. Optics, 13(10), 2317(1974)

2.Appl. Optics, 20, 3553(1981)

**LT-D1216C 7-Hydroxy-4-methylcoumarin**

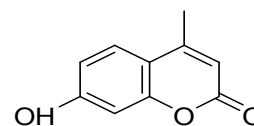
CAS. No.: 90-33-5

Formula : C<sub>10</sub>H<sub>8</sub>O<sub>3</sub>

MW : 176.17

**Dye Laser Characteristics**

Pump source (nm)	Lasing wavelength		Concentration (g/L)	Solvent	Abs (λ-max)	FI (λ-max)
	Peak(nm)	Range(nm)				
FL	454		0.15	ethanol	372 (ethanol)	445 (ethanol)

**LT-D1217C 7-(diethylamino)-4-methyl-2H-1-benzopyran-2-one**

CAS. No.: 91-44-1

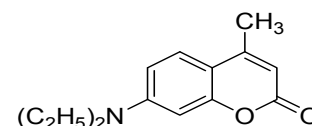
Formula : C<sub>14</sub>H<sub>17</sub>NO<sub>2</sub>

MW : 231.3

**Dye Laser Characteristics**

Pump source (nm)	Lasing wavelength		Concentration (g/L)	Solvent	Abs (λ-max)	FI (λ-max)
	Peak(nm)	Range(nm)				
FL	457	450-484	0.035	ethanol		
XeCl(308)	457	440-478	0.23	ethanol	373 (ethanol)	446 (ethanol) Ref. 1
Vd:YAG(355)	460	442-480	0.25	ethanol		

Reference : 1.Appl. Optics, 24(7), 937(1985)



**LT-D1218C 7-(dimethylamino)-4-methyl-2H-1-benzopyran-2-one**

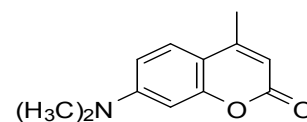
CAS. No.: 87-01-4

Formula : C<sub>12</sub>H<sub>13</sub>NO<sub>2</sub>

MW : 203.24

**Dye Laser Characteristics**

Pump source (nm)	Lasing wavelength		Concentration (g/L)	Solvent	Abs (λ-max)	FI (λ-max)
	Peak(nm)	Range(nm)				
FL	448	466	0.045	ethanol	366 (ethanol)	453 (ethanol)

**LT-D1219C 7-(diethylamino)-2H-1-benzopyran-2-one**

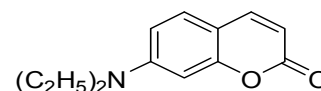
CAS. No.: 20571-42-0

Formula : C<sub>13</sub>H<sub>15</sub>NO<sub>2</sub>

MW : 217.26

**Dye Laser Characteristics**

Pump source (nm)	Lasing wavelength		Concentration (g/L)	Solvent	Abs (λ-max)	FI (λ-max)
	Peak(nm)	Range(nm)				
FL	474	462-487	0.017	methanol		
XeCl(308)	470	449-505	0.54	methanol	13.5	465 (methanol)
Vd:YAG(355)	462	450-485	0.22	ethanol		

**LT-D1220C 2,3,6,7,10,11-hexahydro-1H,5H-cyclopenta[3,4][1]benzopyrano[6,7,8-ij]quinolizin-12(9H)-one**

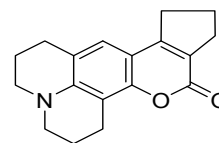
CAS. No.: 41175-45-5

Formula : C<sub>18</sub>H<sub>19</sub>NO<sub>2</sub>

MW : 281.36

**Dye Laser Characteristics**

Pump source (nm)	Lasing wavelength		Concentration (g/L)	Solvent	Abs (λ-max)	FI (λ-max)
	Peak(nm)	Range(nm)				
FL	478			ethanol	386 (ethanol)	465 (ethanol)

**LT-D1221C 2,3,6,7-tetrahydro-9-methyl-1H,5H,11H-[1]benzopyrano-[6,7,8-ij]quinolizin-11-one**

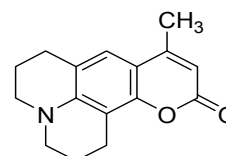
CAS. No.: 41267-76-9

Formula : C<sub>16</sub>H<sub>17</sub>NO<sub>2</sub>

MW : 255.32

**Dye Laser Characteristics**

Pump source (nm)	Lasing wavelength		Concentration (g/L)	Solvent	Abs (λ-max)	FI (λ-max)	Ref.
	Peak(nm)	Range(nm)					
FL	474	456-505	0.04	ethanol	390 (ethanol)	468 (ethanol)	Ref. 1
XeCl(308)	476	461-506	0.77	methanol	(ethanol)	(ethanol)	



Reference : 1.NEW Durham, NH03855

**LT-D1222C 7-(diethylamino)-4-(trifluoromethyl)-2H-1-benzopyran-2-one**

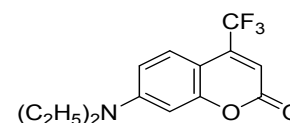
CAS. No.: 41934-47-8

Formula: C<sub>14</sub>H<sub>14</sub>F<sub>3</sub>NO<sub>2</sub>

MW: 285.26

**Dye Laser Characteristics**

Pump source (nm)	Lasing wavelength		Concentration (g/L)	Solvent	Abs (λ-max)	FI (λ-max)
	Peak(nm)	Range(nm)				
FL	481	475-489	0.04	p-Dioxane	404	
XeCl(308)	485	461-515	3.3	p-Dioxane	(methanol)	

**LT-D1223C 7-(dimethylamino)-4-(trifluoromethyl)-2H-1-benzopyran-2-one**

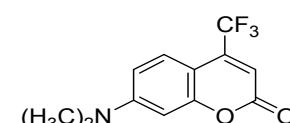
CAS. No.: 53518-14-2

Formula : C<sub>12</sub>H<sub>10</sub>F<sub>3</sub>NO<sub>2</sub>

MW : 257.21

**Dye Laser Characteristics**

Pump source (nm)	Lasing wavelength		Concentration (g/L)	Solvent	Abs (λ-max)	FI (λ-max)
	Peak(nm)	Range(nm)				
FL	479			p-Dioxane	397	511
XeF(351)	519	494-566	2.6	ethanol	(ethanol)	(ethanol) Ref.1



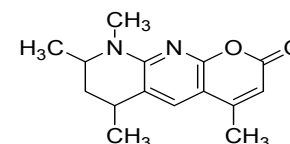
Reference : 1. Applied Optics, 24(7), 937(1985)

**LT-D1224C 6,7,8,9-tetrahydro-6,8,9-trimethyl-4-(trifluoromethyl)-2H-pyrano[2,3-b][1,8]naphthyridin-2-one**

CAS. No.: 62377-37-1

Formula : C<sub>15</sub>H<sub>15</sub>F<sub>3</sub>N<sub>2</sub>O<sub>2</sub> MW : 312.29**Dye Laser Characteristics**

Pump source (nm)	Lasing wavelength		Concentration (g/L)	Solvent	Abs (λ-max)	FI (λ-max)
	Peak(nm)	Range(nm)				
XeCl(308)	489	471-535	1.66	methanol	392 (ethanol)	480 (ethanol)

**LT-D1225C 7-amino-4-(trifluoromethyl)-2H-1-benzopyran-2-one**

CAS. No.: 53518-15-3

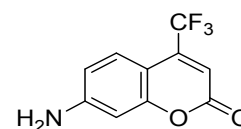
Formula : C<sub>10</sub>H<sub>6</sub>F<sub>3</sub>NO<sub>2</sub>

MW : 229.16

**Dye Laser Characteristics**

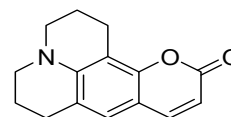
Pump source (nm)	Lasing wavelength		Concentration (g/L)	Solvent	Abs (λ-max)	FI (λ-max)
	Peak(nm)	Range(nm)				
FL	490	467-510	0.05	methanol	381 (ethanol)	482 (ethanol) Ref.1

Reference : 1. Appl. Optics, 17(20), 3268(1978)

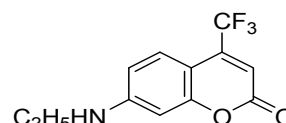


**LT-D1226C 2,3,6,7-tetrahydro-1H,5H,11H-[1]benzopyrano[6,7,8-ij]-quinoliz-11-one**CAS. No.: 58336-35-9 Formula : C<sub>15</sub>H<sub>15</sub>NO<sub>2</sub> MW : 241.37

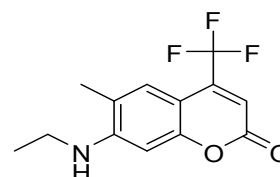
Pump source (nm)	Dye Laser Characteristics			Solvent	Abs (λ-max)	FI (λ-max)
	Lasing wavelength		Concentration			
	Peak(nm)	Range(nm)	(g/L)			
FL	480	460-523	0.024	ethanol	396 (methanol)	475 (methanol)

**LT-D1227C 7-(ethylamino)-4-(trifluoromethyl)-2H-1-benzopyran-2-one**CAS. No.: 52840-38-7 Formula : C<sub>12</sub>H<sub>10</sub>F<sub>3</sub>NO<sub>2</sub> MW : 257.21

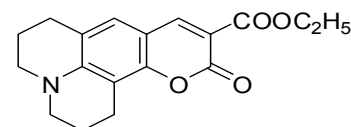
Pump source (nm)	Dye Laser Characteristics			Solvent	Abs (λ-max)	FI (λ-max)
	Lasing wavelength		Concentration			
	Peak(nm)	Range(nm)	(g/L)			
XeCl(308)	506	478-568	2.1	methanol	392 (methanol)	495 (ethanol)
Nd:YAG(355)	500	494-504	0.26	ethanol		

**LT-D1228C 7-(ethylamino)-6-methyl-4-(trifluoromethyl)-2H-1-benzopyran-2-one**CAS. No.: 55804-70-1 Formula : C<sub>13</sub>H<sub>12</sub>F<sub>3</sub>NO<sub>2</sub> MW : 271.24

Pump source (nm)	Dye Laser Characteristics			Solvent	Abs (λ-max)	FI (λ-max)
	Lasing wavelength		Concentration			
	Peak(nm)	Range(nm)	(g/L)			
XeCl(308)	500	480-537	1.9	methanol	395 (methanol)	490 (ethanol)
Nd:YAG(355)	500	480-541	0.4	ethanol		

**LT-D1229C 2,3,6,7-tetrahydro-11-oxo-1H,5H,11H-[1]benzopyrano[6,7,8-ij]quinolizine-10-carboxylic acid, ethyl ester**CAS. No.: 55804-66-5 Formula : C<sub>18</sub>H<sub>19</sub>NO<sub>2</sub> MW : 313.34

Pump source (nm)	Dye Laser Characteristics			Solvent	Abs (λ-max)	FI (λ-max)
	Lasing wavelength		Concentration			
	Peak(nm)	Range(nm)	(g/L)			
FL	505	496-519		MeOH/H <sub>2</sub> O =1/1	437 (methanol)	479 (ethanol)



LT-D1230C

**2,3,6,7-tetrahydro-10-(3-pyridinyl)-1H,5H,11H-[1]benzopyrano[6,7,8-ij]quinolizin-11-one**

CAS. No.: 87349-92-6

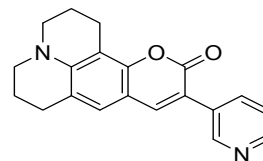
Formula : C<sub>20</sub>H<sub>18</sub>N<sub>2</sub>O<sub>2</sub>

MW : 318

**Dye Laser Characteristics**

Pump source (nm)	Lasing wavelength		Concentration (g/L)	Solvent	Abs (λ-max)	Fl (λ-max)
	Peak(nm)	Range(nm)				
FL	511	505-518		ethanol	426 (ethanol)	496 (ethanol)

Reference : 1.Optic Commun., 47(1) 57(1983)



LT-D1231C

**3-(2-benzothiazolyl)-7-(diethylamino)-2H-1-benzopyran-2-one**

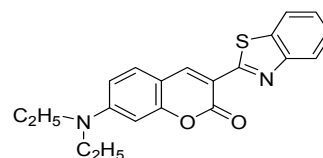
CAS. No.: 38215-36-0

Formula : C<sub>20</sub>H<sub>18</sub>N<sub>2</sub>O<sub>2</sub>S

MW : 350.44

**Dye Laser Characteristics**

Pump source (nm)	Lasing wavelength		Concentration (g/L)	Solvent	Abs (λ-max)	Fl (λ-max)
	Peak(nm)	Range(nm)				
FL	531	511-556	0.035	methanol	460 (ethanol)	507 (ethanol)



LT-D1232C

**2-(6-amino-3-imino-3H-xanthen-9-yl)-benzoic acid, monohydrochloride; 2-(6-amino-3-imino-3H-xanthen-9-yl)-benzoic acid**

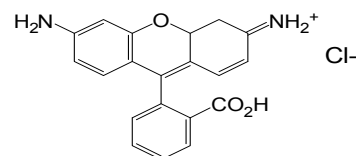
CAS. No.: 13558-31-1

Formula : C<sub>20</sub>H<sub>14</sub>N<sub>2</sub>O<sub>3</sub>·HCl

MW : 366.8

**Dye Laser Characteristics**

Pump source (nm)	Lasing wavelength		Concentration (g/L)	Solvent	Abs (λ-max)	Fl (λ-max)
	Peak(nm)	Range(nm)				
FL	554	530-580	0.18	methanol	508 (methanol)	532 (ethanol)
XeCl(308)	555	544-580	1.1	methanol		



LT-D1233C

**2-[4-[4-(dimethylamino)phenyl]-1,3-butadienyl]-1,3,3-trimethyl-3H-indolium perchlorate**

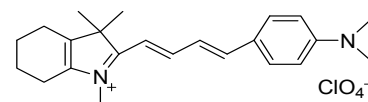
CAS. No.: 76433-27-7

Formula : C<sub>23</sub>H<sub>27</sub>N<sub>2</sub>·ClO<sub>4</sub>

MW : 430.93

**Dye Laser Characteristics**

Pump source (nm)	Lasing wavelength		Concentration (g/L)	Solvent	Abs (λ-max)	Fl (λ-max)
	Peak(nm)	Range(nm)				
Nd:YAG(532)	716	692-743		methanol	605 (methanol)	670 (methanol)





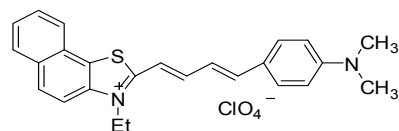
LT-D1234C

**2-[4-[4-(dimethylamino)phenyl]-1,3-butadienyl]-3-ethyl-naphtho[2,1-d]thiazolium perchlorate**

CAS. No.: 89872-07-1

Formula : C<sub>25</sub>H<sub>25</sub>N<sub>2</sub>S·ClO<sub>4</sub> MW : 484**Dye Laser Characteristics**

Pump source (nm)	Lasing wavelength		Concentration (g/L)	Solvent	Abs (λ-max) (methanol)	Fl (λ-max) (methanol)
	Peak(nm)	Range(nm)				
Nd:YAG(532)	718	700-743	0.15	methanol	573 (methanol)	706 (methanol)



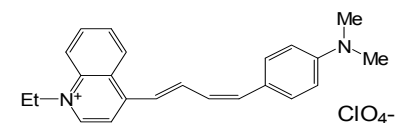
LT-D1235C

**4-[4-[4-(dimethylamino)phenyl]-1,3-butadienyl]-1-ethyl quinolinium perchlorate**

CAS. No.: 92479-59-9

Formula : C<sub>23</sub>H<sub>25</sub>N<sub>2</sub>·ClO<sub>4</sub> MW : 428.9**Dye Laser Characteristics**

Pump source (nm)	Lasing wavelength		Concentration (g/L)	Solvent	Abs (λ-max) (methanol)	Fl (λ-max) (methanol)
	Peak(nm)	Range(nm)				
Nd:YAG(532)	785	758-826	0.14	ethanol	558 (methanol)	766 (methanol)



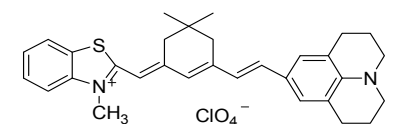
LT-D1236C

**2-(6-(9-(2,3,6,7-Tetrahydro-1H,5H-benzo(i,j)quinolizinium)))2,4-neopentylene-1,3,5-hexatrienyl)-3-methylbenzothiazoliumperchlorate**

CAS. No.: 385437-35-4

Formula : C<sub>31</sub>H<sub>35</sub>N<sub>2</sub>S·ClO<sub>4</sub> MW : 567.15**Dye Laser Characteristics**

Pump source (nm)	Lasing wavelength		Concentration (g/L)	Solvent	Abs (λ-max)	Fl (λ-max)
	Peak(nm)	Range(nm)				
Nd:YAG(532)	880	856-918	0.57	propylene carbonate		
XeCl(308)	881	856-919	1.14	DMSO		



LT-D1237C

**2-[5-(1,3-dihydro-1,3,3-trimethyl-2H-indol-2-ylidene)-1,3-pentadienyl]-1,3,3-trimethyl-3H-indolium iodide or(1,1',3,3,3',3'-hexamethyl-2,2'-indodicarbocyanine iodide)**

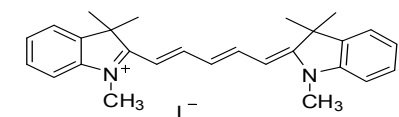
CAS. No.: 36536-22-8

Formula : C<sub>27</sub>H<sub>31</sub>N<sub>2</sub>·I

MW : 510.46

**Dye Laser Characteristics**

Pump source (nm)	Lasing wavelength		Concentration (g/L)	Solvent	Abs (λ-max) (ethanol)	Fl (λ-max) (ethanol)
	Peak(nm)	Range(nm)				
Nd:YAG(585)	675		0.1	methanol	643 (ethanol)	670 (ethanol)



LT-D1238C

**3-ethyl-2-[7-(3-ethyl-2(3H)-benzoxazolylidene)-1,3,5-heptatrienyl]-benzoxazolium iodide**

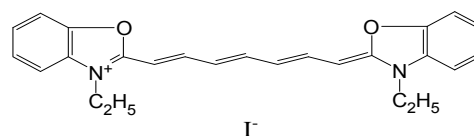
CAS. No.: 15185-43-0

Formula : C<sub>25</sub>H<sub>25</sub>N<sub>2</sub>O<sub>2</sub>I

MW : 512.39

## Dye Laser Characteristics

Pump source (nm)	Lasing wavelength		Concentration (g/L)	Solvent	Abs (λ-max)	Fl (λ-max)
	Peak(nm)	Range(nm)				
XeCl(308)	798	777-800	0.77	DMSO	686	726
N2(337)	777	762-802	0.61	DMSO	(ethanol)	(ethanol)



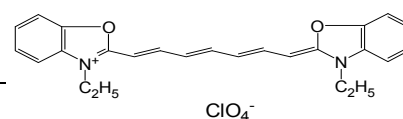
LT-D1239C

**3-ethyl-2-[7-(3-ethyl-2(3H)-benzoxazolylidene)-1,3,5-heptatrienyl]-benzoxazolium perchlorate**Formula : C<sub>25</sub>H<sub>25</sub>N<sub>2</sub>O<sub>2</sub>ClO<sub>4</sub>

MW : 484.94

## Dye Laser Characteristics

Pump source (nm)	Lasing wavelength		Concentration (g/L)	Solvent	Abs (λ-max)	Fl (λ-max)
	Peak(nm)	Range(nm)				
XeCl(308)	798	777-800	0.77	DMSO	688	725
N2(337)	777	761-802	0.61	DMSO	(ethanol)	(ethanol)



LT-D1240C

**2-[7-(1,3-dihydro-1,3,3-trimethyl-2H-indol-2-ylidene)-1,3,5-heptatrienyl]-1,3,3-trimethyl-3H-indolium iodide**

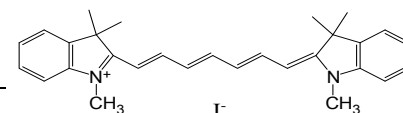
CAS. No.: 19764-96-6

Formula : C<sub>29</sub>H<sub>33</sub>N<sub>2</sub>I

MW : 536.5

## Dye Laser Characteristics

Pump source (nm)	Lasing wavelength		Concentration (g/L)	Solvent	Abs (λ-max)	Fl (λ-max)
	Peak(nm)	Range(nm)				
XeCl(308)	826	812-838	0.75	methanol		
XeCl(308)	851	822-887	1.23	DMSO	751 (DMSO)	792 (DMSO)
N2(337)	846	828-891	1	DMSO		



LT-D1241C

**2-[7-(1,3-dihydro-1,3,3-trimethyl-2H-indol-2-ylidene)-1,3,5-heptatrienyl]-1,3,3-trimethyl-3H-indolium perchlorate**

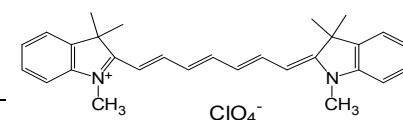
CAS. No.: 16595-48-5

Formula : C<sub>29</sub>H<sub>33</sub>N<sub>2</sub>ClO<sub>4</sub>

MW : 509.04

## Dye Laser Characteristics

Pump source (nm)	Lasing wavelength		Concentration (g/L)	Solvent	Abs (λ-max)	Fl (λ-max)
	Peak(nm)	Range(nm)				
XeCl(308)	826	812-838	0.75	methanol		
XeCl(308)	851	822-887	1.23	DMSO	750 (DMSO)	790 (DMSO)
N2(337)	846	828-890	1	DMSO		



LT-D1242C

**3-ethyl-2-[7-(3-ethyl-2(3H)-benzothiazolylidene)-1,3,5-heptatrienyl]-benzothiazolium iodide**

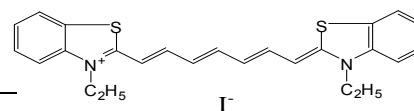
CAS. No.: 3071-70-3

Formula : C<sub>25</sub>H<sub>25</sub>N<sub>2</sub>S<sub>2</sub>I

MW : 544.51

**Dye Laser Characteristics**

Pump source (nm)	Lasing wavelength		Concentration (g/L)	Solvent	Abs (λ-max)	FI (λ-max)
	Peak(nm)	Range(nm)				
XeCl(308)	849	828-883	0.42	DMSO		
XeCl(308)	879	836-925	0.38	DMSO	761 (ethanol)	813 (ethanol)
N2(337)	855	840-877	0.65	DMSO		



LT-D1243C

**2-[7-[1,3-dihydro-1,1-dimethyl-3-(4-sulfobutyl)-2H-benz[e]indol-2-ylidene]-1,3,5-heptatrienyl]-1,1-dimethyl-3-(4-sulfobutyl)-1H-benz[e]indolium hydroxide, inner salt, sodium salt**

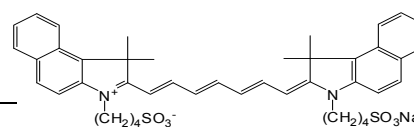
CAS. No.: 3599-32-4

Formula : C<sub>43</sub>H<sub>48</sub>N<sub>2</sub>O<sub>6</sub>S<sub>2</sub>Na

MW : 774.97

**Dye Laser Characteristics**

Pump source (nm)	Lasing wavelength		Concentration (g/L)	Solvent	Abs (λ-max)	FI (λ-max)
	Peak(nm)	Range(nm)				
Nd:YAG(532)	863	845-905	0.08	DMSO	795 (DMSO)	832 (DMSO)
N2(337)	887	872-935	1	DMSO		



LT-D1244C

**2-[2-[2-(diphenylamino)-3-[(1-ethylnaphtho[1,2-d]thiazol-2(H)-ylidene)ethylidene]-1-cyclopenten-1-yl]ethenyl]-1-ethyl-naphtho[1,2-d]thiazolium perchlorate**

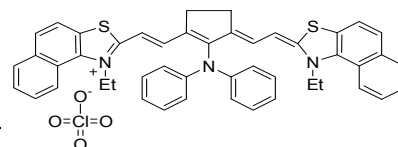
CAS. No.: 54849-65-9

Formula : C<sub>47</sub>H<sub>40</sub>N<sub>3</sub>S<sub>2</sub>ClO<sub>4</sub>

MW : 810.42

**Dye Laser Characteristics**

Pump source (nm)	Lasing wavelength		Concentration (g/L)	Solvent	Abs (λ-max)	FI (λ-max)
	Peak(nm)	Range(nm)				
FL	972					839 (methanol)



LT-D1245C

**5-chloro-2-[2-[3-[(5-chloro-3-ethyl-2(3H)-benzothiazol-ylidene)ethylidene]-2-(diphenylamino)-1-cyclopenten-1-yl]ethenyl]-3-ethyl benzothiazolium perchlorate**

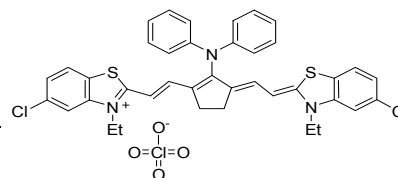
CAS. No.: 53655-17-7

Formula : C<sub>39</sub>H<sub>34</sub>Cl<sub>2</sub>N<sub>3</sub>S<sub>2</sub>ClO<sub>4</sub>

MW : 779.2

**Dye Laser Characteristics**

Pump source (nm)	Lasing wavelength		Concentration (g/L)	Solvent	Abs (λ-max)	FI (λ-max)
	Peak(nm)	Range(nm)				
FL	950					
XeCl(308)	880	868-900	0.25	DMF	822 (DMSO)	881 (DMSO)
N2(337)	912	896-939	1.17	DMSO		



LT-D1246C

**3-ethyl-2-[5-(3-ethyl-2(3H)-benzoxazolylidene)-1,3-pentadienyl]-benzoxazolium iodide**

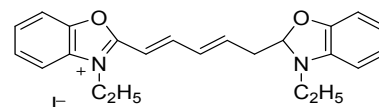
CAS. No.: 14806-50-9

Formula : C<sub>23</sub>H<sub>23</sub>N<sub>2</sub>O<sub>2</sub>·I

MW : 486.35

**Dye Laser Characteristics**

Pump source (nm)	Lasing wavelength		Concentration (g/L)	Solvent	Abs (λ-max)	Fl (λ-max)
	Peak(nm)	Range(nm)				
FL	662			DMSO	582 (ethanol)	610 (ethanol)



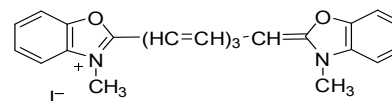
LT-D1247C

**3-methyl-2-[7-(3-methyl-2(3H)-benzoxazolylidene)-1,3,5-heptatrienyl]-benzoxazolium iodide;3,3-Dimethyloxatricarbocyanine Iodide**Formula : C<sub>23</sub>H<sub>21</sub>N<sub>2</sub>O<sub>2</sub>·I

MW : 484.34

**Dye Laser Characteristics**

Pump source (nm)	Lasing wavelength		Concentration (g/L)	Solvent	Abs (λ-max)	Fl (λ-max)
	Peak(nm)	Range(nm)				
FL	810			DMSO	682 (ethanol)	718 (ethanol)



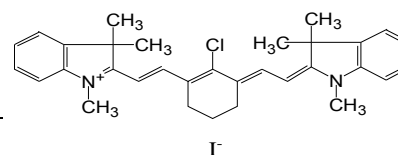
LT-D1248C

**2-[2-[2-chloro-3-[(1,3-dihydro-1,3,3-trimethyl-2H-indol-2-ylidene)-ethylidene]-1-cyclohexen-1-yl]ethenyl]-1,3,3-trimethylindolium iodide]**Formula : C<sub>32</sub>H<sub>36</sub>ClN<sub>2</sub>·I

MW : 611.02

**Dye Laser Characteristics**

Pump source (nm)	Lasing wavelength		Concentration (g/L)	Solvent	Abs (λ-max)	Fl (λ-max)
	Peak(nm)	Range(nm)				
					775 (methanol)	817 (ethanol)



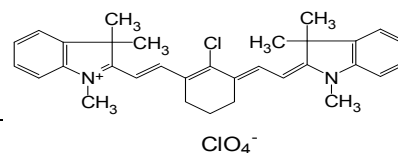
LT-D1249C

**2-[2-[2-Chloro-3-[(1,3-dihydro-1,3,3-trimethyl-2H-indol-2-ylidene) ethyli-dene]-1-cyclohexen-1-yl]-ethenyl]-1,3,3-trimethyl-1H-indolium perchlorate**Formula : C<sub>32</sub>H<sub>36</sub>ClN<sub>2</sub>·ClO<sub>4</sub><sup>-</sup>

MW : 583.56

**Dye Laser Characteristics**

Pump source (nm)	Lasing wavelength		Concentration (g/L)	Solvent	Abs (λ-max)	Fl (λ-max)
	Peak(nm)	Range(nm)				
					776 (methanol)	



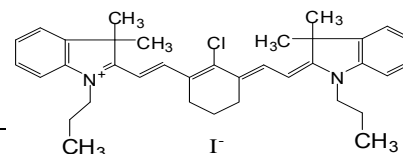
LT-D1250C

2-[2-[2-chloro-3-[(1,3-dihydro-3,3-dimethyl-1-propyl-2H-indol-2-ylidene)-ethylidene]-1-cyclohexen-1-yl]-ethenyl]-3,3-dimethyl-1-propylindolium iodide

Formula : C<sub>36</sub>H<sub>44</sub>ClN<sub>2</sub>I MW : 667.12

Dye Laser Characteristics

Pump source (nm)	Lasing wavelength		Concentration (g/L)	Solvent	Abs (λ-max)	Fl (λ-max)
	Peak(nm)	Range(nm)				
					776 (methanol)	818



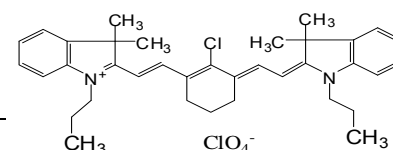
LT-D1251C

2-[2-[2-Chloro-3-[(1,3-dihydro-3,3-dimethyl-1-propyl-2H-indol-2-ylidene)-ethylidene]-1-cyclohexen-1-yl]-ethenyl]-3,3-dimethyl-1-propyl-1H-indolium perchlorate

Formula : C<sub>36</sub>H<sub>44</sub>ClN<sub>2</sub>ClO<sub>4</sub> MW : 639.66

Dye Laser Characteristics

Pump source (nm)	Lasing wavelength		Concentration (g/L)	Solvent	Abs (λ-max)	Fl (λ-max)
	Peak(nm)	Range(nm)				
					778 (methanol)	



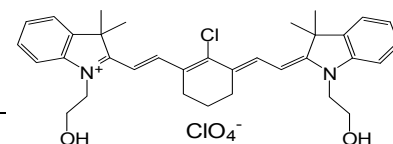
LT-D1252C

2-[2-[2-Chloro-3-[(1,3-dihydro-3,3-dimethyl-1-(2-hydroxy)-ethyl-2H-Indol-2-ylidene)ethylidene]-1-cyclohexen-1-yl]ethenyl]-3,3-dimethyl-1-(2-hydroxy)ethyl-1H-indolium perchlorate

Formula : C<sub>34</sub>H<sub>40</sub>ClN<sub>2</sub>O<sub>2</sub>ClO<sub>4</sub> MW : 643.61

Dye Laser Characteristics

Pump source (nm)	Lasing wavelength		Concentration (g/L)	Solvent	Abs (λ-max)	Fl (λ-max)
	Peak(nm)	Range(nm)				
					778 (methanol)	815 (methanol)



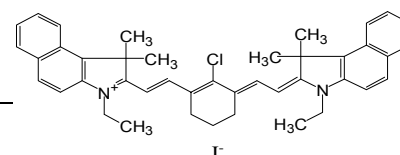
LT-D1253C

2-[2-[2-chloro-3-[2-(1,3-dihydro-3,3-dimethyl-1-ethyl-2H-benz[e]indol-2-ylidene)ethylidene]-1-cyclohexen-1-yl]-ethenyl]-3,3-dimethyl-1-ethyl-1H-benz[e]indolium iodide

Formula : C<sub>42</sub>H<sub>44</sub>ClN<sub>2</sub>I MW : 739.18

Dye Laser Characteristics

Pump source (nm)	Lasing wavelength		Concentration (g/L)	Solvent	Abs (λ-max)	Fl (λ-max)
	Peak(nm)	Range(nm)				
					815 (methanol)	

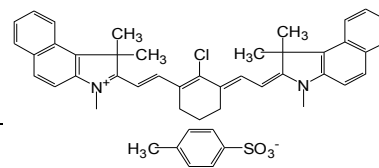


LT-D1254C

2-[2-[2-Chloro-3-[2-(1,3-dihydro-1,1,3-trimethyl-2H-benzo[e]-indol-2-ylidene)-ethylidene]-1-cyclohexen-1-yl]-ethenyl]-1,1,3-trimethyl-1H-benzo [e]indolium-4-methylbenzenesulfonate.

Formula : C<sub>47</sub>H<sub>47</sub>ClN<sub>2</sub>O<sub>3</sub>S MW : 755.41

Pump source (nm)	Dye Laser Characteristics			Abs (λ-max)	Fl (λ-max)
	Lasing wavelength Peak(nm)	Concentration Range(nm)	Solvent (g/L)		
				814 (methanol)	



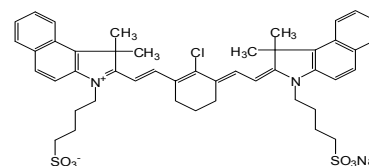
LT-D1255C

2-[2-[2-(4-Methylbenzeneoxy)-3-[(1,3-dihydro-3,3-dimethyl-1-(4-sulfobutyl)-2H-benz[e]indol-2-ylidene)-ethylidene]-1-cyclohexen-1-yl]-ethenyl]-3,3-di-methyl-1-(4-sulfo-butyl)-1H-benz[e]indolium, inner salt, monosodium salt.

Formula : C<sub>46</sub>H<sub>50</sub>ClN<sub>2</sub>NaO<sub>6</sub>S<sub>2</sub>

MW : 849.47

Pump source (nm)	Dye Laser Characteristics			Abs (λ-max)	Fl (λ-max)
	Lasing wavelength Peak(nm)	Concentration Range(nm)	Solvent (g/L)		
				782 (methanol)	



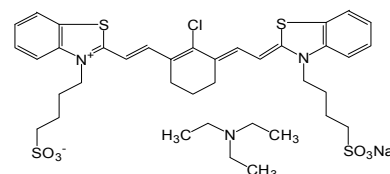
LT-D1256C

2-[2-[2-Chloro-3-[2-(3-(4-sulfobutyl) -3H-benzthiazol-2-ylidene)ethylidene]-1-cyclohexen-1-yl]-ethenyl]-3-(4-sulfobutyl) enzthiazonium, inner salt

Formula : C<sub>38</sub>H<sub>49</sub>N<sub>3</sub>O<sub>6</sub>S<sub>4</sub>Cl

MW : 807.52

Pump source (nm)	Dye Laser Characteristics			Abs (λ-max)	Fl (λ-max)
	Lasing wavelength Peak(nm)	Concentration Range(nm)	Solvent (g/L)		
				801 (methanol)	



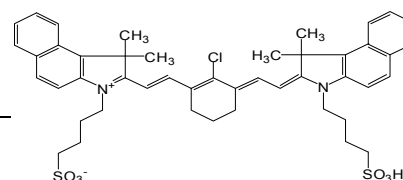
LT-D1257C

2-[2-[2-Chloro-3-[2-(1,3-dihydro-3,3-dimethyl-1-(4-sulfobutyl)-2H-benz[e]-indol-2-ylidene)-ethylidene]-1-cyclohexen-1-yl]-ethenyl]-3,3-dimethyl-1-(4-sulfobutyl)-1H-benz[e]indolium, inner salt

Formula : C<sub>46</sub>H<sub>51</sub>N<sub>2</sub>O<sub>6</sub>S<sub>2</sub>Cl

MW : 827.49

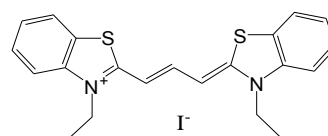
Pump source (nm)	Dye Laser Characteristics			Abs (λ-max)	Fl (λ-max)
	Lasing wavelength Peak(nm)	Concentration Range(nm)	Solvent (g/L)		
				820 (methanol)	



**LT-D1258C 3,3-Dimethylthiacarbocyanine iodide**Formula : C<sub>21</sub>H<sub>21</sub>N<sub>2</sub>S<sub>2</sub>I

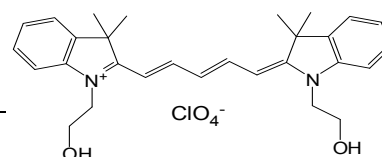
MW : 492.43

Pump source (nm)	Dye Laser Characteristics			Abs (λ-max)	Fl (λ-max)
	Lasing wavelength Peak(nm)	Concentration (g/L)	Solvent		
	559			559 (methanol)	572 (methanol)

**LT-D1259C 2-[5-(1,3-Dihydro-3,3-dimethyl-(2-hydroxyethyl)-2H-benz[e]indol-2-ylidene)-1,3-pentadienyl]-3,3-dimethyl-1-(2-hydroxyethyl)-3Hbenz[e]indolium perchlorate**Formula : C<sub>37</sub>H<sub>39</sub>N<sub>2</sub>O<sub>6</sub>Cl

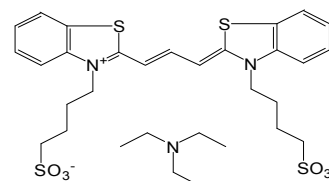
MW : 643.18

Pump source (nm)	Dye Laser Characteristics			Abs (λ-max)	Fl (λ-max)
	Lasing wavelength Peak(nm)	Concentration (g/L)	Solvent		
	678			678 (methanol)	731 (methanol)

**LT-D1260C 3-(4-Sulfobutyl)-2-[3-[3-(4-sulfo-butyl)-3H-benzothiazol-2-ylidene]-1-pro-penyl]-benzothiazolium, inner salt, triethyl ammonium salt.**Formula : C<sub>31</sub>H<sub>42</sub>N<sub>3</sub>O<sub>6</sub>S<sub>4</sub>

MW : 680.93

Pump source (nm)	Dye Laser Characteristics			Abs (λ-max)	Fl (λ-max)
	Lasing wavelength Peak(nm)	Concentration (g/L)	Solvent		
	559			559 (methanol)	

**LT-D1261C 2-[7-(1,3-Dihydro-3,3-dimethyl-1-(4-sulfobutyl)-2H-indol-2-ylidene)-1,3,5-heptatrienyl]-3,3-dimethyl-1-(4-sulfobutyl)-3H-indolium, innersalt, monosodium salt**Formula : C<sub>35</sub>H<sub>43</sub>N<sub>2</sub>O<sub>6</sub>S<sub>2</sub>Na

MW : 674.81

Pump source (nm)	Dye Laser Characteristics			Abs (λ-max)	Fl (λ-max)
	Lasing wavelength Peak(nm)	Concentration (g/L)	Solvent		
	745			745 (methanol)	788 (methanol)

